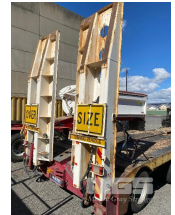




2006 DRAKE LOW LOADER TRI AXLE HYDRAULIC GOOSE NECK

Asset Details

Build Date:	2006
Make:	DRAKE
Length:	
Sub Cat:	LOW LOADER
Axle Config:	TRI AXLE HYDRAULIC GOOSE NECK
Body Type:	
Model:	LOW LOADER O.D.
ATM:	70,000kg
Volume:	
Rating:	
Suspension:	
Axle Type:	
Rim Type:	
Tyre Size:	
Brakes:	
Coupling:	



Asset Identification

Rego:	NO PLATES	State:		Expiry:		Papers:	
Plant No:		VIN / Chassis:	6T9T25ABF60AKGO42				
S/N:		Hubometer:					

Features

REAR HYDRAULIC LOAD RAMPS,
2 x SPARE WHEELS, AUTO GREASE SYSTEM,
2 x UNDER TRAY TOOL BOXES,
FRONT MOUNT ALLOY WATER TANK
REAR PIN HITCH