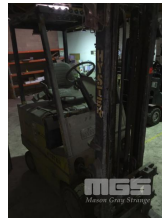




# HYSTER ELECTRIC FORK LIFT

## Asset Details

Build Date:	
Make:	HYSTER
Model:	
Series:	
Drive Type:	
Axle Config:	
Body Type:	ELECTRIC FORK LIFT
Gearbox:	
Transmission:	
Engine Make:	
Engine Size:	
Fuel Type:	
Diff Make / Size:	
Suspension:	
Ext Colour:	
Tyre Size:	
Tyre Condition:	



Doors:	Seats:	Length:	Capacity:
Volume:	Height:	Width:	GVM:
GCM:	SWL:	HP:	Tare:

## Asset Identification

Odometer:	Rego:	State:	Expiry:
VIN:		PIN:	
Engine No:		Hours:	
Papers: NO	Keys:	Books: NO	Service Books: NO

## Features

- 2,000kg LIFT
- 4,300mm HEIGHT, SIDE SHIFT
- SOLDI TYRES
- BATTERIES, (FAULTY) & CHARGER