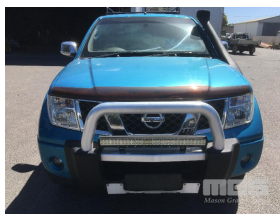


2007 NISSAN NAVARA ST-X D40 DUAL CAB UTE 4x4

Asset Details

Build Date:	10/2007
Compliance:	1/2008
Make:	NISSAN
Model:	NAVARA
Variant:	ST-X
Series:	D40
Body Type:	DUAL CAB UTE
Engine Size:	2.5 LITRE, 4 CYLINDER
Transmission:	6 SPEED MANUAL TRANSMISSION
Fuel Type:	DIESEL TURBO
Ext. Colour:	METALLIC BLUE
Int. Colour:	GREY DUCO
Doors:	4
Seats:	5
Drive Type:	4x4



Asset Identification

Odometer:	216,155kms INDICATED	Rego:	NO PLATES	State:		Expiry:	
VIN:	VSKCVND40A0258970	PIN:					
Engine No:		Hours:					
Papers:		Keys:	1	Books:	YES	Service Books:	YES

Features

ABS, AIR BAG, AIR CON, ALLOY WHEELS, BLUETOOTH, CANOPY, CD PLAYER, CENTRAL LOCKING, CRUISE CONTROL, NUDGE BAR, POWER STEERING, POWER WINDOWS, ROOF RACKS, SIDE STEP, SPARE WHEEL, SPOT LIGHTS, TOW BAR, SNORKEL

(KEY #14)