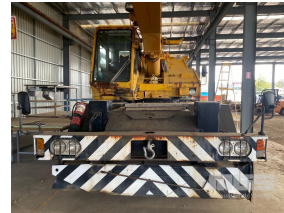




1989 TADANO TR-250E, 25 TONNE, 4x4 ALL TERRAIN CRANE

Asset Details

Build Date:	1989
Make:	TADANO
Model:	TR-250E,
Series:	25 TONNE,
Drive Type:	4x4
Axle Config:	
Body Type:	ALL TERRAIN CRANE
Gearbox:	3 SPEED
Transmission:	MANUAL
Engine Make:	
Engine Size:	6 CYLINDER DIESEL ENGINE
Fuel Type:	
Diff Make / Size:	
Suspension:	
Ext Colour:	
Tyre Size:	
Tyre Condition:	



Doors:	Seats:	Length:	Capacity:
Volume:	Height:	Width:	GVM:
GCM:	SWL:	HP:	Tare:

Asset Identification

Odometer:	17648	Rego:		State:		Expiry:	
VIN:	TR250E100401	PIN:	530260	Hours:	2119		
Engine No:		Books:		Service Books:			
Papers:		Keys:	1				

Features

ENCLOSED CAB
360 DEG ROTATION,
TELESCOPIC BOOM
25,000KG LIFT CAP @ 3mtrs
BOOM LENGHT: 8.35 TO 26.2mtrs
JIB LENGHT: 7.5mtrs
TYRE SIZE: 20.5 x 25-20PR
FITTED WITH 4 x STABILIZER OUTRIGGERS,

NOT IN SURVAY
CRANE IS FULLY OPERATIONAL
NOTE: SOME RUST IN CAB

(LOCATED AT TORRENSVILLE, PLEASE CALL MGS TO ARRANGE INSPECTION)